 IAEG-SDGs  
Inter-agency Expert Group on SDG Indicators

*Working Group on Geospatial Information*

Setting the scene...

# Data integration & National activities

Mrs. Marie Haldorson, Director Regions and Environment  
Department, Statistics Sweden

 UN-GGIM | United Nations Secretariat  
Global Geospatial Information Management

*Positioning geospatial information to address global challenges*  
ggim.un.org

 UN-GGIM  
UNITED NATIONS  
COMMITTEE OF EXPERTS ON  
GLOBAL GEOSPATIAL  
INFORMATION MANAGEMENT

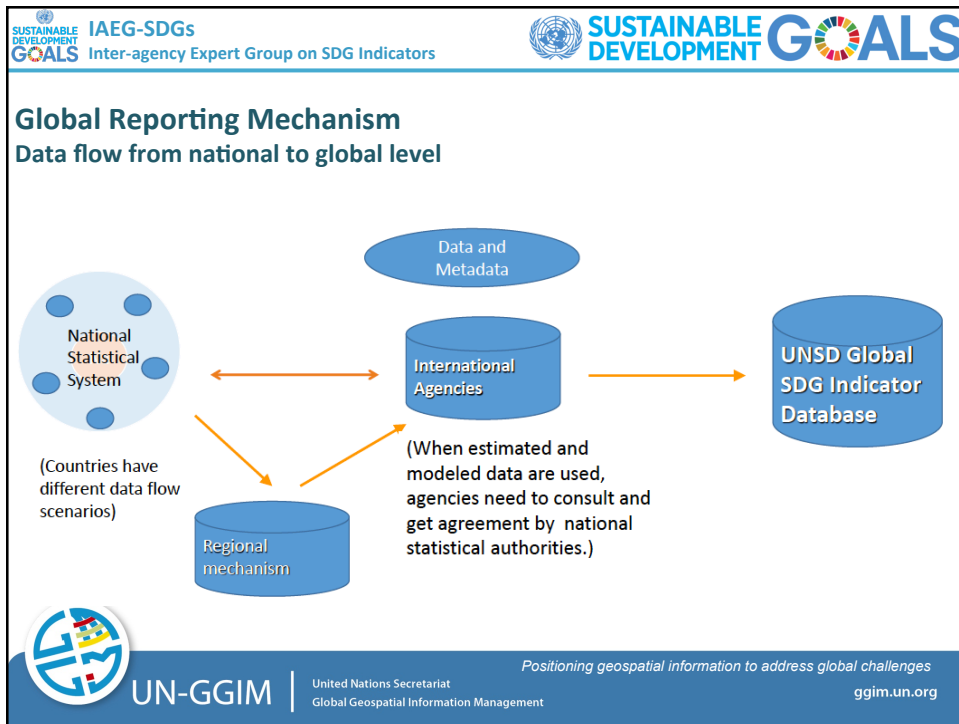
Future trends in geospatial  
information management:  
the five to ten year vision  
SECOND EDITION

## Future trends: Increased need for integration of Statistical and Geospatial information

- SDG monitoring on all levels
- Producing information at the right scale
- Institutional arrangements

 UN-GGIM | United Nations Committee of Experts on  
Global Geospatial Information Management

*Positioning geospatial information to address global challenges*  
ggim.un.org



**SUSTAINABLE DEVELOPMENT GOALS**

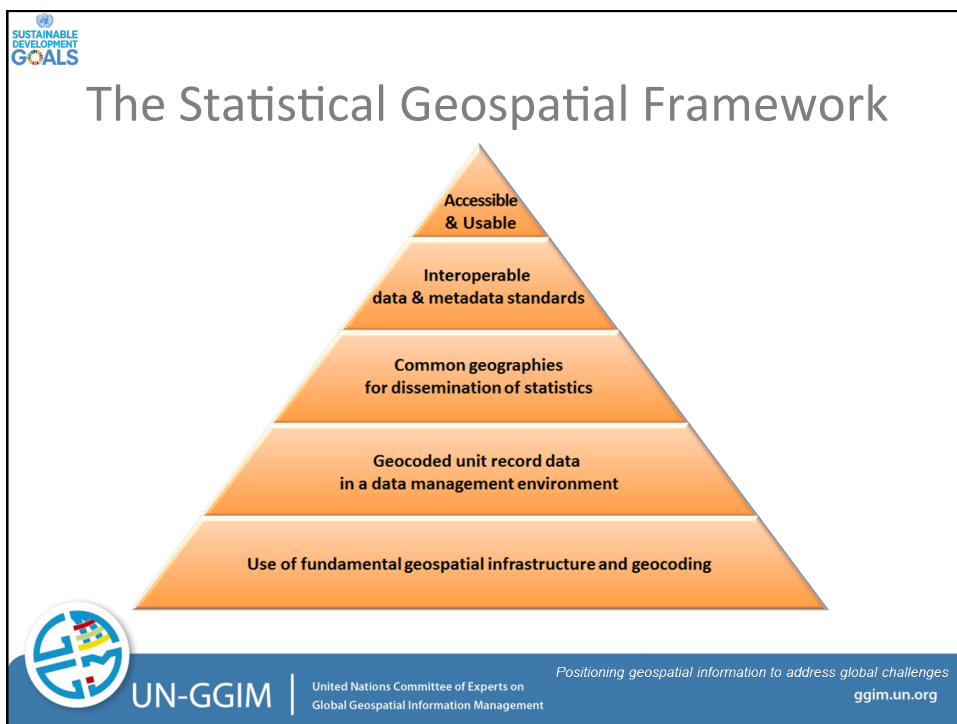
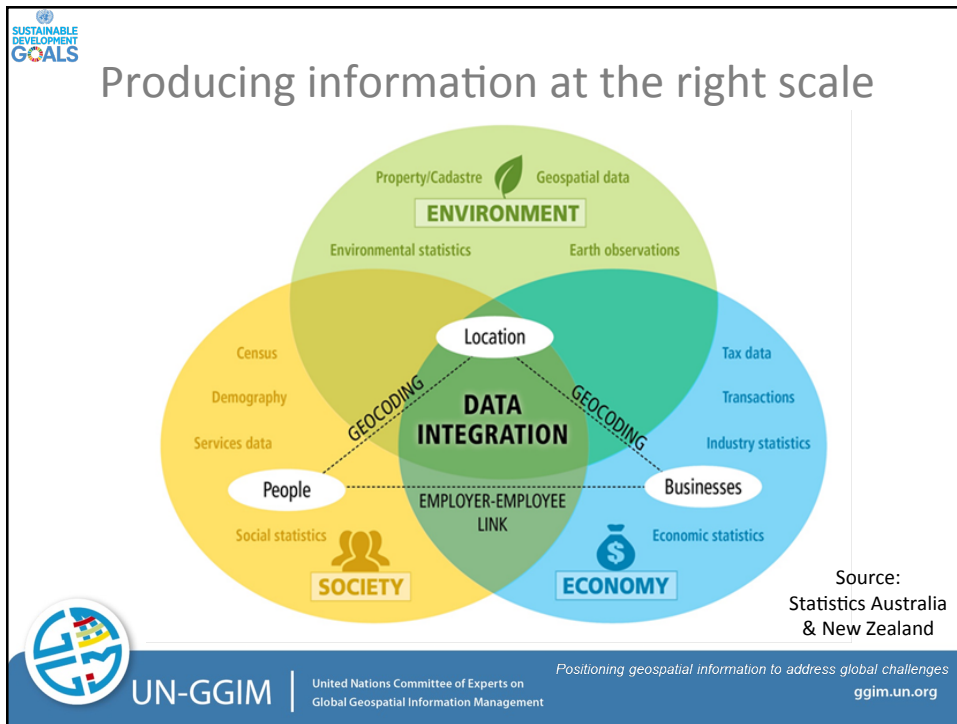
## “Disaggregation by location”

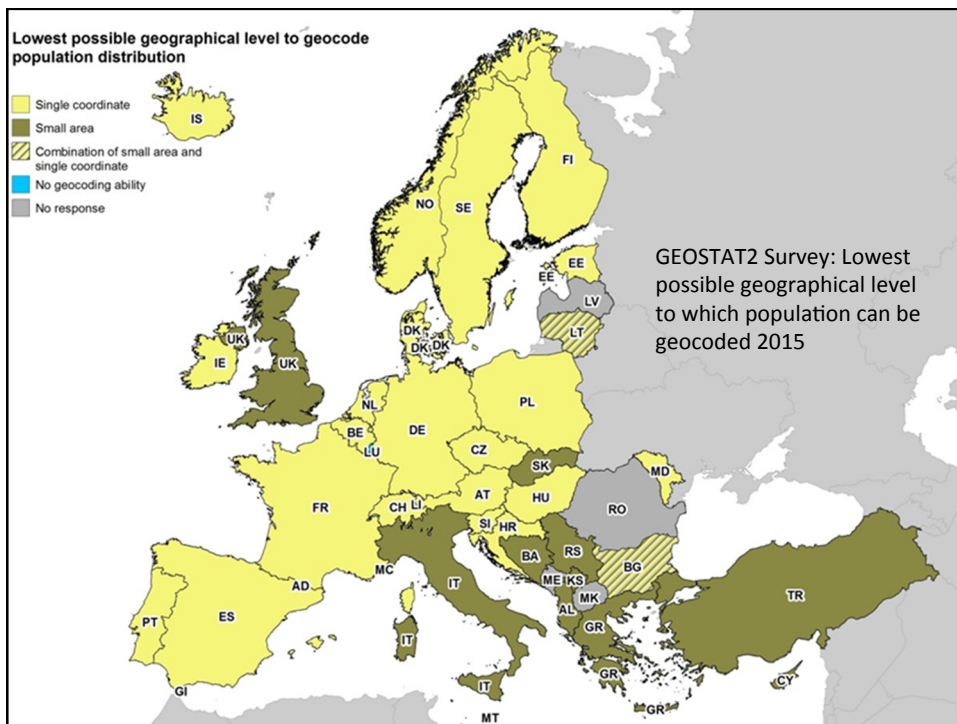
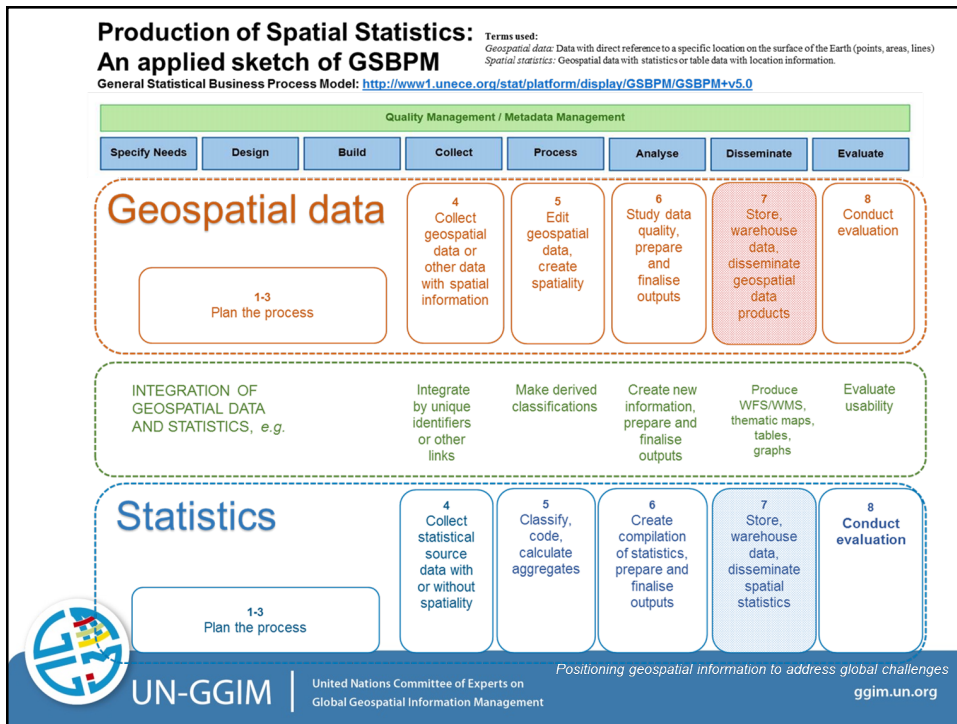
- Top-down AND Bottom-up methods
- Access to administrative registers
- Geocoding to X/Y
- Flexible production
- Flexible output, e.g. urban/rural

**ESS Eurogrid Population Map 2009**  
Population by 1 square km grids. A hybrid grid map based on population register and estimated data.

**UN-GGIM** | United Nations Committee of Experts on  
Global Geospatial Information Management

*Positioning geospatial information to address global challenges*  
ggim.un.org





**SUSTAINABLE DEVELOPMENT GOALS**

### Institutional arrangements: The Swedish Geospatial Data Cooperation

**Before 2011**

**and after.....**

**Joint Agreement on Data Sharing**

**UN-GGIM** | United Nations Committee of Experts on Global Geospatial Information Management

*Positioning geospatial information to address global challenges*  
ggim.un.org

**SUSTAINABLE DEVELOPMENT GOALS**

**UN-GGIM: EUROPE**  
United Nations Committee of Experts on Global Geospatial Information Management

## Data Integration – Definition of priority user needs for combinations of data

UN-GGIM: Europe, Work Group B, First delivery

Version 1.1  
2015-10-23

**UN-GGIM** | United Nations Committee of Experts on Global Geospatial Information Management

*Positioning geospatial information to address global challenges*  
ggim.un.org



## The Swedish Delegation for Agenda 2030

- Aims to support and stimulate national implementation of Agenda 2030;
- Assess to which extent Sweden meets the goals and targets;
- Propose an overall action plan for the national implementation;
- Share good examples of social, economic and environmental sustainable development.



UN-GGIM | United Nations Committee of Experts on  
Global Geospatial Information Management

*Positioning geospatial information to address global challenges*  
ggim.un.org



## Swedish Authorities: Deliver on the SDGs

- 80 Governmental Authorities have reported to the Government how their operations help in achieving the SDGs
- Statistics Sweden offered to:
  - Set up the national indicator system, taking into account existing environmental indicators
  - Provide capacity building in developing countries
  - Provide expertise in the IAEG-SDGs




UN-GGIM | United Nations Committee of Experts on  
Global Geospatial Information Management

*Positioning geospatial information to address global challenges*  
ggim.un.org

**SUSTAINABLE DEVELOPMENT GOALS**

## Statistics Sweden also...



- Produce a wide range of statistics useful when creating indicators;
- Support in how to interpret trends over time;
- Support the national statistical system;
- Develop integrated indicators showing if we move towards a more sustainable society;
- Give support and advice on how to manage monitoring activities outside the statistical system.

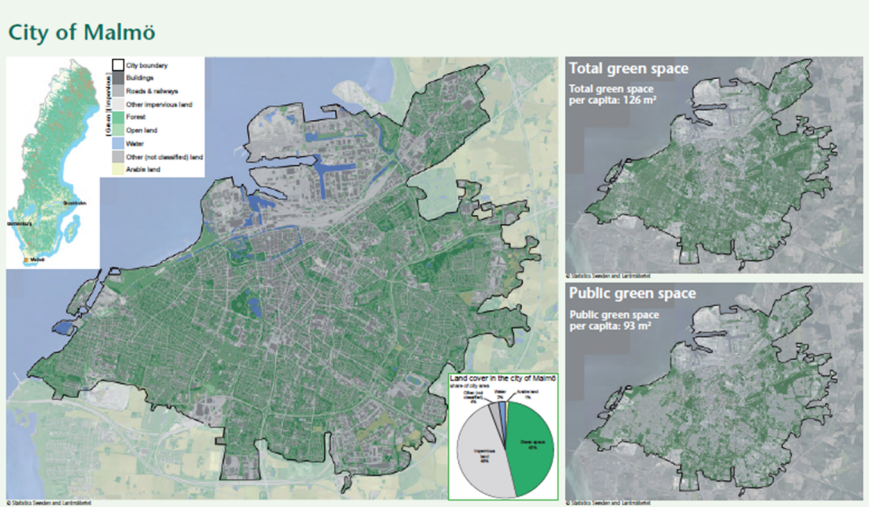
**UN-GGIM** | United Nations Committee of Experts on Global Geospatial Information Management

*Positioning geospatial information to address global challenges*  
ggim.un.org

**SUSTAINABLE DEVELOPMENT GOALS**

### Target 11.7: By 2030, provide universal access to safe, inclusive and accessible, green and public spaces, in particular for women and children, older persons and persons with disabilities

**City of Malmö**



**Total green space**  
Total green space per capita: 126 m<sup>2</sup>


**Public green space**  
Public green space per capita: 93 m<sup>2</sup>

**Land cover in the city of Malmö**

Land Cover Type	Percentage
Open land	~45%
Buildings	~35%
Water	~15%
Other (not classified) land	~5%
Arable land	~2%


**UN-GGIM** | United Nations Committee of Experts on Global Geospatial Information Management

*Positioning geospatial information to address global challenges*  
ggim.un.org



Delivering on Agenda 2030:

## How does the Swedish NMCA help Sweden to achieve the goals?




1.4 ..ownership and control over land

11.2 ..accessible and sustainable transport systems

5.a ..women's equal rights to land ownership and/or control

11.3 ..sustainable urbanization



2.3 ..secure and equal access to land


11.5 ..reduce loss from disasters

6.5 ..integrated water resources management

15.1 ..sustainable use of terrestrial and inland freshwater ecosystems

9.1 ..sustainable and resilient infrastructure

15.2 ..sustainable management of all types of forests



UN-GGIM | United Nations Committee of Experts on Global Geospatial Information Management

ggim.un.org



IAEG-SDGs  
Inter-agency Expert Group on SDG Indicators



*Working Group on Geospatial Information*

# Thank you!

marie.haldorson@scb.se



UN-GGIM | United Nations Secretariat  
Global Geospatial Information Management

*Positioning geospatial information to address global challenges*  
ggim.un.org